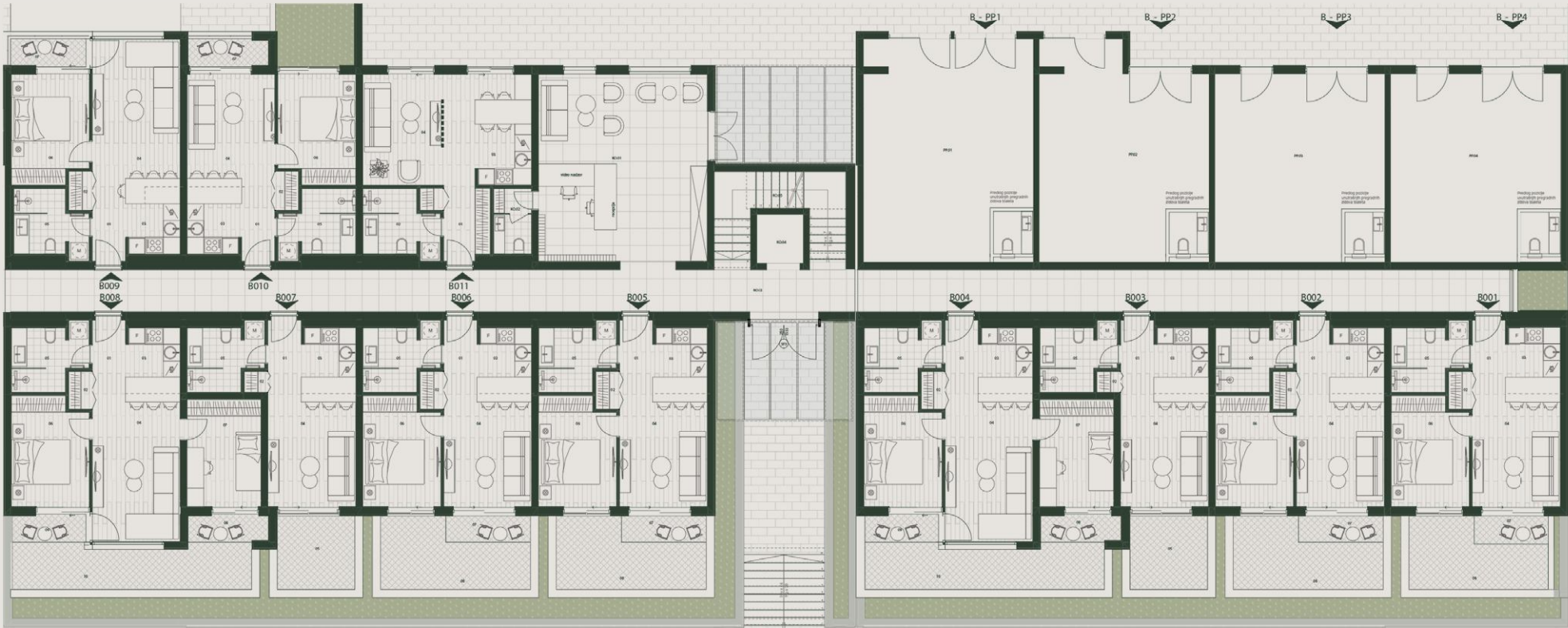


# Building B | Ground Floor



<b>B001   1BD</b>		<b>B002   1BD</b>		<b>B003   S</b>		<b>B004   2BD</b>		<b>B005   1BD</b>		<b>B006   1BD</b>	
INTERNAL AREA (SQM)	40,79	INTERNAL AREA (SQM)	47,24	INTERNAL AREA (SQM)	27,06	INTERNAL AREA (SQM)	57,46	INTERNAL AREA (SQM)	41,30	INTERNAL AREA (SQM)	41,24
EXTERNAL AREA (SQM)	11,44	EXTERNAL AREA (SQM)	12,24	EXTERNAL AREA (SQM)	7,92	EXTERNAL AREA (SQM)	15,32	EXTERNAL AREA (SQM)	12,35	EXTERNAL AREA (SQM)	12,24
PRICE	153.700€	PRICE	159.000€	PRICE	116.600€	PRICE	227.900€	PRICE	159.000€	PRICE	159.000€

<b>B007   S</b>		<b>B008   2BD</b>		<b>B009   1BD</b>		<b>B010   1BD</b>		<b>B011   S</b>	
INTERNAL AREA (SQM)	27,06	INTERNAL AREA (SQM)	57,41	INTERNAL AREA (SQM)	44,35	INTERNAL AREA (SQM)	40,81	INTERNAL AREA (SQM)	34,85
EXTERNAL AREA (SQM)	7,92	EXTERNAL AREA (SQM)	15,21	EXTERNAL AREA (SQM)		EXTERNAL AREA (SQM)		EXTERNAL AREA (SQM)	
PRICE	116.600€	PRICE	227.900€	PRICE	150.520€	PRICE	137.800€	PRICE	111.300€

## PARKSIDE RESIDENCES BY SOLUM

DISCLAIMER: Reference to any measured area or definition is in accordance with International Property Measurement Standards (IPMS) published by the International Property Measurement Standards Coalition (IPMSC). The Net Internal Area comprises internal floor space and outdoor areas, excluding internal and external walls, and other structural elements. The Total Sellable Area encompasses all internal and external spaces, including all walls, columns and structural elements. Apartment designs and layouts presented are indicative and subject to change. The specifications are as of the brochure's preparation date and may be adjusted in accordance with permitted variances under apartment sale contracts. Floorplans are not to scale, provided for guidance only, and dimensions are approximate sizes.

# Building B | First Floor



<b>B101   2BD</b>	<b>B102   S</b>	<b>B103   1BD</b>	<b>B104   1BD</b>	<b>B105   1BD</b>	<b>B106   1BD</b>
INTERNAL AREA (SQM)	INTERNAL AREA (SQM)	INTERNAL AREA (SQM)	INTERNAL AREA (SQM)	INTERNAL AREA (SQM)	INTERNAL AREA (SQM)
57,21	27,06	44,97	44,50	44,50	44,97
EXTERNAL AREA (SQM)	EXTERNAL AREA (SQM)	EXTERNAL AREA (SQM)	EXTERNAL AREA (SQM)	EXTERNAL AREA (SQM)	EXTERNAL AREA (SQM)
PRICE	PRICE	PRICE	PRICE	PRICE	PRICE
196.100€	100.700€	153.700€	153.700€	SOLD	SOLD

<b>B107   S</b>	<b>B108   2BD</b>	<b>B109   1BD</b>	<b>B110   1BD</b>	<b>B111   S</b>	<b>B112   2BD</b>
INTERNAL AREA (SQM)	INTERNAL AREA (SQM)	INTERNAL AREA (SQM)	INTERNAL AREA (SQM)	INTERNAL AREA (SQM)	INTERNAL AREA (SQM)
27,06	57,41	44,50	44,97	27,06	57,41
EXTERNAL AREA (SQM)	EXTERNAL AREA (SQM)	EXTERNAL AREA (SQM)	EXTERNAL AREA (SQM)	EXTERNAL AREA (SQM)	EXTERNAL AREA (SQM)
PRICE	PRICE	PRICE	PRICE	PRICE	PRICE
100.700€	SOLD	153.700€	SOLD	SOLD	196.100€

<b>B113   2BD</b>	<b>B114   S</b>	<b>B115   1BD</b>	<b>B116   1BD</b>
INTERNAL AREA (SQM)	INTERNAL AREA (SQM)	INTERNAL AREA (SQM)	INTERNAL AREA (SQM)
57,21	27,06	45,03	44,50
EXTERNAL AREA (SQM)	EXTERNAL AREA (SQM)	EXTERNAL AREA (SQM)	EXTERNAL AREA (SQM)
PRICE	PRICE	PRICE	PRICE
196.100€	100.700€	153.700€	153.700€

## PARKSIDE RESIDENCES BY SOLUM

DISCLAIMER: Reference to any measured area or definition is in accordance with International Property Measurement Standards (IPMS) published by the International Property Measurement Standards Coalition (IPMSC). The Net Internal Area comprises internal floor space and outdoor areas, excluding internal and external walls, and other structural elements. The Total Sellable Area encompasses all internal and external spaces, including all walls, columns and structural elements. Apartment designs and layouts presented are indicative and subject to change. The specifications are as of the brochure's preparation date and may be adjusted in accordance with permitted variances under apartment sale contracts. Floorplans are not to scale, provided for guidance only, and dimensions are approximate sizes.



# Building B | Second Floor



## B201 | 2BD

INTERNAL AREA (SQM)	57,21
EXTERNAL AREA (SQM)	
PRICE	SOLD

## B202 | S

INTERNAL AREA (SQM)	27,06
EXTERNAL AREA (SQM)	
PRICE	106.000€

## B203 | 1BD

INTERNAL AREA (SQM)	44,97
EXTERNAL AREA (SQM)	
PRICE	163.240€

## B204 | 1BD

INTERNAL AREA (SQM)	44,50
EXTERNAL AREA (SQM)	
PRICE	163.240€

## B205 | 1BD

INTERNAL AREA (SQM)	44,50
EXTERNAL AREA (SQM)	
PRICE	163.240€

## B206 | 1BD

INTERNAL AREA (SQM)	44,96
EXTERNAL AREA (SQM)	
PRICE	SOLD

## B207 | S

INTERNAL AREA (SQM)	27,06
EXTERNAL AREA (SQM)	
PRICE	SOLD

## B208 | 2BD

INTERNAL AREA (SQM)	57,41
EXTERNAL AREA (SQM)	
PRICE	SOLD

## B209 | 1BD

INTERNAL AREA (SQM)	44,50
EXTERNAL AREA (SQM)	
PRICE	SOLD

## B210 | 1BD

INTERNAL AREA (SQM)	44,97
EXTERNAL AREA (SQM)	
PRICE	SOLD

## B211 | S

INTERNAL AREA (SQM)	27,06
EXTERNAL AREA (SQM)	
PRICE	SOLD

## B212 | 2BD

INTERNAL AREA (SQM)	57,46
EXTERNAL AREA (SQM)	
PRICE	SOLD

## B213 | 2BD

INTERNAL AREA (SQM)	57,21
EXTERNAL AREA (SQM)	
PRICE	SOLD

## B214 | S

INTERNAL AREA (SQM)	27,06
EXTERNAL AREA (SQM)	
PRICE	106.000€

## B215 | 1BD

INTERNAL AREA (SQM)	44,97
EXTERNAL AREA (SQM)	
PRICE	163.240€

## B216 | 1BD

INTERNAL AREA (SQM)	44,55
EXTERNAL AREA (SQM)	
PRICE	163.240€

### PARKSIDE RESIDENCES BY SOLUM

DISCLAIMER: Reference to any measured area or definition is in accordance with International Property Measurement Standards (IPMS) published by the International Property Measurement Standards Coalition (IPMSC). The Net Internal Area comprises internal floor space and outdoor areas, excluding internal and external walls, and other structural elements. The Total Sellable Area encompasses all internal and external spaces, including all walls, columns and structural elements. Apartment designs and layouts presented are indicative and subject to change. The specifications are as of the brochure's preparation date and may be adjusted in accordance with permitted variances under apartment sale contracts. Floorplans are not to scale, provided for guidance only, and dimensions are approximate sizes.

# Building B | Third Floor



## B301 | 2BD

INTERNAL AREA (SQM)	57,21
EXTERNAL AREA (SQM)	
PRICE	217.300€

## B302 | S

INTERNAL AREA (SQM)	27,06
EXTERNAL AREA (SQM)	
PRICE	SOLD

## B303 | 1BD

INTERNAL AREA (SQM)	44,97
EXTERNAL AREA (SQM)	
PRICE	172.780€

## B304 | 1BD

INTERNAL AREA (SQM)	44,50
EXTERNAL AREA (SQM)	
PRICE	172.780€

## B305 | 1BD

INTERNAL AREA (SQM)	44,50
EXTERNAL AREA (SQM)	
PRICE	172.780€

## B306 | 1BD

INTERNAL AREA (SQM)	44,97
EXTERNAL AREA (SQM)	
PRICE	SOLD

## B307 | S

INTERNAL AREA (SQM)	27,06
EXTERNAL AREA (SQM)	
PRICE	SOLD

## B308 | 2BD

INTERNAL AREA (SQM)	57,41
EXTERNAL AREA (SQM)	
PRICE	SOLD

## B309 | 1BD

INTERNAL AREA (SQM)	44,50
EXTERNAL AREA (SQM)	
PRICE	172.780€

## B310 | 1BD

INTERNAL AREA (SQM)	44,97
EXTERNAL AREA (SQM)	
PRICE	SOLD

## B311 | S

INTERNAL AREA (SQM)	27,06
EXTERNAL AREA (SQM)	
PRICE	SOLD

## B312 | 2BD

INTERNAL AREA (SQM)	57,41
EXTERNAL AREA (SQM)	
PRICE	SOLD

## B313 | 2BD

INTERNAL AREA (SQM)	57,21
EXTERNAL AREA (SQM)	
PRICE	SOLD

## B314 | S

INTERNAL AREA (SQM)	27,06
EXTERNAL AREA (SQM)	
PRICE	SOLD

## B315 | 1BD

INTERNAL AREA (SQM)	44,97
EXTERNAL AREA (SQM)	
PRICE	172.780€

## B316 | 1BD

INTERNAL AREA (SQM)	44,55
EXTERNAL AREA (SQM)	
PRICE	172.780€

### PARKSIDE RESIDENCES BY SOLUM

DISCLAIMER: Reference to any measured area or definition is in accordance with International Property Measurement Standards (IPMS) published by the International Property Measurement Standards Coalition (IPMSC). The Net Internal Area comprises internal floor space and outdoor areas, excluding internal and external walls, and other structural elements. The Total Sellable Area encompasses all internal and external spaces, including all walls, columns and structural elements. Apartment designs and layouts presented are indicative and subject to change. The specifications are as of the brochure's preparation date and may be adjusted in accordance with permitted variances under apartment sale contracts. Floorplans are not to scale, provided for guidance only, and dimensions are approximate sizes.



# Building B | Fourth Floor



## B401 | 2BD

INTERNAL AREA (SQM)	56,87
EXTERNAL AREA (SQM)	
PRICE	238.500€

## B402 | S

INTERNAL AREA (SQM)	27,06
EXTERNAL AREA (SQM)	
PRICE	121.900€

## B403 | 1BD

INTERNAL AREA (SQM)	44,97
EXTERNAL AREA (SQM)	
PRICE	185.500€

## B404 | 1BD

INTERNAL AREA (SQM)	44,50
EXTERNAL AREA (SQM)	
PRICE	185.500€

## B405 | 1BD

INTERNAL AREA (SQM)	44,50
EXTERNAL AREA (SQM)	
PRICE	185.500€

## B406 | 1BD

INTERNAL AREA (SQM)	44,97
EXTERNAL AREA (SQM)	
PRICE	185.500€

## B407 | S

INTERNAL AREA (SQM)	27,06
EXTERNAL AREA (SQM)	
PRICE	SOLD

## B408 | 2BD

INTERNAL AREA (SQM)	57,07
EXTERNAL AREA (SQM)	
PRICE	SOLD

## B409 | 2BD

INTERNAL AREA (SQM)	84,05
EXTERNAL AREA (SQM)	
PRICE	349.800€

## B410 | 3BD

INTERNAL AREA (SQM)	181,35
EXTERNAL AREA (SQM)	58,82
PRICE	1.007.000€

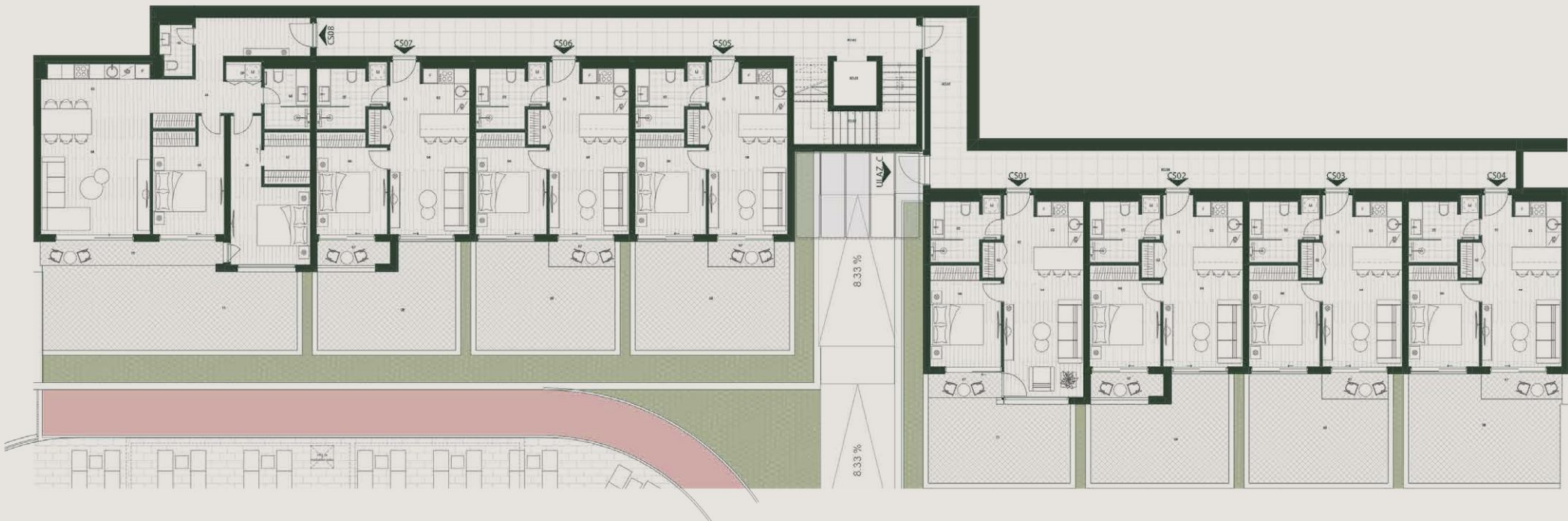
## B411 | 1BD

INTERNAL AREA (SQM)	44,50
EXTERNAL AREA (SQM)	
PRICE	185.500€

### PARKSIDE RESIDENCES BY SOLUM

DISCLAIMER: Reference to any measured area or definition is in accordance with International Property Measurement Standards (IPMS) published by the International Property Measurement Standards Coalition (IPMSC). The Net Internal Area comprises internal floor space and outdoor areas, excluding internal and external walls, and other structural elements. The Total Sellable Area encompasses all internal and external spaces, including all walls, columns and structural elements. Apartment designs and layouts presented are indicative and subject to change. The specifications are as of the brochure's preparation date and may be adjusted in accordance with permitted variances under apartment sale contracts. Floorplans are not to scale, provided for guidance only, and dimensions are approximate sizes.

# Building C | - Ground Floor



CS01   1BD		CS02   1BD		CS03   1BD		CS04   1BD		CS05   1BD		CS06   1BD	
INTERNAL AREA (SQM)	45,03	INTERNAL AREA (SQM)	41,39	INTERNAL AREA (SQM)	41,35	INTERNAL AREA (SQM)	41,92	INTERNAL AREA (SQM)	41,35	INTERNAL AREA (SQM)	41,35
EXTERNAL AREA (SQM)	18,24	EXTERNAL AREA (SQM)	19,77	EXTERNAL AREA (SQM)	21,13	EXTERNAL AREA (SQM)	23,04	EXTERNAL AREA (SQM)	23,88	EXTERNAL AREA (SQM)	21,13
PRICE	174.900€	PRICE	169.600€	PRICE	169.600€	PRICE	169.600€	PRICE	169.600€	PRICE	169.600€

CS07   1BD		CS08   2BD	
INTERNAL AREA (SQM)	41,39	INTERNAL AREA (SQM)	86,93
EXTERNAL AREA (SQM)	19,77	EXTERNAL AREA (SQM)	33,23
PRICE	169.600€	PRICE	339.200€

## PARKSIDE RESIDENCES BY SOLUM

DISCLAIMER: Reference to any measured area or definition is in accordance with International Property Measurement Standards (IPMS) published by the International Property Measurement Standards Coalition (IPMSC). The Net Internal Area comprises internal floor space and outdoor areas, excluding internal and external walls, and other structural elements. The Total Sellable Area encompasses all internal and external spaces, including all walls, columns and structural elements. Apartment designs and layouts presented are indicative and subject to change. The specifications are as of the brochure's preparation date and may be adjusted in accordance with permitted variances under apartment sale contracts. Floorplans are not to scale, provided for guidance only, and dimensions are approximate sizes.

# Building C | Ground Floor



<b>C001   1BD</b>		<b>C002   1BD</b>		<b>C003   1BD</b>		<b>C004   1BD</b>		<b>C005   1BD</b>		<b>C006   1BD</b>	
INTERNAL AREA (SQM)	44,97	INTERNAL AREA (SQM)	41,39	INTERNAL AREA (SQM)	45,39	INTERNAL AREA (SQM)	44,92	INTERNAL AREA (SQM)	44,92	INTERNAL AREA (SQM)	45,39
EXTERNAL AREA (SQM)		EXTERNAL AREA (SQM)		EXTERNAL AREA (SQM)		EXTERNAL AREA (SQM)	23,04	EXTERNAL AREA (SQM)		EXTERNAL AREA (SQM)	
PRICE	SOLD	PRICE	SOLD	PRICE	SOLD	PRICE	153.700€	PRICE	153.700€	PRICE	SOLD

<b>C007   1BD</b>		<b>C008   2BD</b>	
INTERNAL AREA (SQM)	41,39	INTERNAL AREA (SQM)	86,96
EXTERNAL AREA (SQM)		EXTERNAL AREA (SQM)	
PRICE	SOLD	PRICE	312.700€

## PARKSIDE RESIDENCES BY SOLUM

DISCLAIMER: Reference to any measured area or definition is in accordance with International Property Measurement Standards (IPMS) published by the International Property Measurement Standards Coalition (IPMSC). The Net Internal Area comprises internal floor space and outdoor areas, excluding internal and external walls, and other structural elements. The Total Sellable Area encompasses all internal and external spaces, including all walls, columns and structural elements. Apartment designs and layouts presented are indicative and subject to change. The specifications are as of the brochure's preparation date and may be adjusted in accordance with permitted variances under apartment sale contracts. Floorplans are not to scale, provided for guidance only, and dimensions are approximate sizes.



# Building C | First Floor



C101   1BD	
INTERNAL AREA (SQM)	44,98
EXTERNAL AREA (SQM)	
PRICE	159.000€

C102   1BD	
INTERNAL AREA (SQM)	41,39
EXTERNAL AREA (SQM)	
PRICE	SOLD

C103   1BD	
INTERNAL AREA (SQM)	45,39
EXTERNAL AREA (SQM)	
PRICE	SOLD

C104   1BD	
INTERNAL AREA (SQM)	44,92
EXTERNAL AREA (SQM)	
PRICE	163.240€

C105   1BD	
INTERNAL AREA (SQM)	44,92
EXTERNAL AREA (SQM)	
PRICE	163.240€

C106   1BD	
INTERNAL AREA (SQM)	45,39
EXTERNAL AREA (SQM)	
PRICE	163.240€

C107   1BD	
INTERNAL AREA (SQM)	41,39
EXTERNAL AREA (SQM)	
PRICE	148.400€

C108   2BD	
INTERNAL AREA (SQM)	86,96
EXTERNAL AREA (SQM)	
PRICE	328.600€

## PARKSIDE RESIDENCES BY SOLUM

DISCLAIMER: Reference to any measured area or definition is in accordance with International Property Measurement Standards (IPMS) published by the International Property Measurement Standards Coalition (IPMSC). The Net Internal Area comprises internal floor space and outdoor areas, excluding internal and external walls, and other structural elements. The Total Sellable Area encompasses all internal and external spaces, including all walls, columns and structural elements. Apartment designs and layouts presented are indicative and subject to change. The specifications are as of the brochure's preparation date and may be adjusted in accordance with permitted variances under apartment sale contracts. Floorplans are not to scale, provided for guidance only, and dimensions are approximate sizes.



# Building C | Second Floor



## C201 | 1BD

INTERNAL AREA (SQM)	44,97
EXTERNAL AREA (SQM)	
PRICE	169.600€

## C202 | 1BD

INTERNAL AREA (SQM)	41,40
EXTERNAL AREA (SQM)	
PRICE	159.000€

## C203 | 1BD

INTERNAL AREA (SQM)	45,39
EXTERNAL AREA (SQM)	
PRICE	172.780€

## C204 | 1BD

INTERNAL AREA (SQM)	44,92
EXTERNAL AREA (SQM)	
PRICE	172.780€

## C205 | 1BD

INTERNAL AREA (SQM)	44,92
EXTERNAL AREA (SQM)	
PRICE	SOLD

## C206 | 1BD

INTERNAL AREA (SQM)	45,39
EXTERNAL AREA (SQM)	
PRICE	SOLD

## C207 | 3BD

INTERNAL AREA (SQM)	138,67
EXTERNAL AREA (SQM)	
PRICE	SOLD

### PARKSIDE RESIDENCES BY SOLUM

DISCLAIMER: Reference to any measured area or definition is in accordance with International Property Measurement Standards (IPMS) published by the International Property Measurement Standards Coalition (IPMSC). The Net Internal Area comprises internal floor space and outdoor areas, excluding internal and external walls, and other structural elements. The Total Sellable Area encompasses all internal and external spaces, including all walls, columns and structural elements. Apartment designs and layouts presented are indicative and subject to change. The specifications are as of the brochure's preparation date and may be adjusted in accordance with permitted variances under apartment sale contracts. Floorplans are not to scale, provided for guidance only, and dimensions are approximate sizes.

# Building C | Third Floor



C301   2BD		C302   1BD		C303   1BD		C304   1BD		C305   1BD		C306   2BD	
INTERNAL AREA (SQM)	85,61	INTERNAL AREA (SQM)	45,39	INTERNAL AREA (SQM)	44,92	INTERNAL AREA (SQM)	44,92	INTERNAL AREA (SQM)	45,39	INTERNAL AREA (SQM)	109,07
EXTERNAL AREA (SQM)		EXTERNAL AREA (SQM)		EXTERNAL AREA (SQM)		EXTERNAL AREA (SQM)		EXTERNAL AREA (SQM)		EXTERNAL AREA (SQM)	6,50
PRICE	360.400€	PRICE	182.320€	PRICE	182.320€	PRICE	182.320€	PRICE	182.320€	PRICE	530.000€

## PARKSIDE RESIDENCES BY SOLUM

DISCLAIMER: Reference to any measured area or definition is in accordance with International Property Measurement Standards (IPMS) published by the International Property Measurement Standards Coalition (IPMSC). The Net Internal Area comprises internal floor space and outdoor areas, excluding internal and external walls, and other structural elements. The Total Sellable Area encompasses all internal and external spaces, including all walls, columns and structural elements. Apartment designs and layouts presented are indicative and subject to change. The specifications are as of the brochure's preparation date and may be adjusted in accordance with permitted variances under apartment sale contracts. Floorplans are not to scale, provided for guidance only, and dimensions are approximate sizes.